

## Installing and Configuring a Network Dongle

Using a network dongle is a very flexible way of managing ArtemiS SUITE licenses. For workgroups, departments or companies with several ArtemiS SUITE users, the network dongle allows an optimized utilization and organization of the licenses in the network. This Application Note explains how to install and configure your network dongles:

Required software installations	1
Admin Control Center	1
Configuring the Network Dongle	2
Using favorites in the license selection dialog	3
Example	3

### Required software installations

In order to use the network dongle, the dongle driver must be installed on both the computer the dongle is physically connected to (called the “license server” in the following) and the computers ArtemiS SUITE is to be used on (called “client computers” or “clients” in the following). The license server can be any computer in the network the client computers are connected to. It must only be ensured that this computer is running as soon as a client requires a license. Since the licenses are stored on the dongle, the license server can be changed at any time simply by connecting the network dongle to a different computer, which then acts as the license server.

You can download the installation file for the latest dongle driver in the HEAD acoustics Download Center<sup>1</sup>, for example. If the license server is not only used for providing the licenses, but also for using ArtemiS SUITE locally, the corresponding ArtemiS SUITE software packages have to be installed in addition to the dongle driver.

On each client computer, ArtemiS SUITE and the desired additional software tools (such as HEAD Recorder) must be installed in addition to the dongle driver, too.

As soon as the installations described above are completed, the network dongle can be connected to the server.

### Admin Control Center

Entering the URL <http://localhost:1947> in a web browser opens the user interface of the Admin Control Center.

The left column of this user interface lists the **Options**. These include a **Help** item, which opens the online help for using and configuring the dongle.

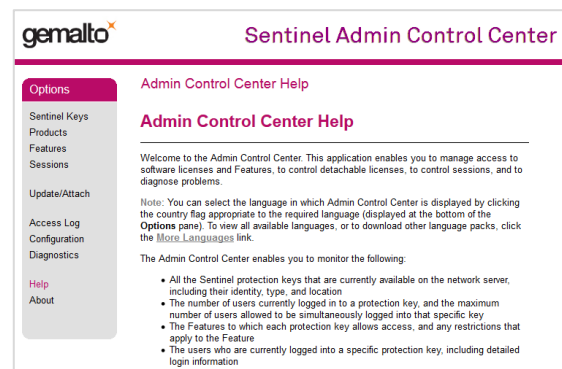


Figure 1: Admin Control Center

<sup>1</sup> [https://www.head-acoustics.de/eng/nvh\\_head\\_dongle\\_tools\\_software\\_download.php](https://www.head-acoustics.de/eng/nvh_head_dongle_tools_software_download.php) -> **HASP dongle driver**

## Configuring the Network Dongle

To configure the network dongle, open the Admin Control Center in a web browser on the license server (URL: <http://localhost:1947><sup>2</sup>) and click on **Configuration** in the **Options**.

This opens the configuration menu containing six tabs, on which various settings for the dongle can be configured. For example, on the **Basic Settings** tab, you can enable password protection in order to restrict access to the Admin Control Center to authorized persons.

The **Access from Remote Clients** tab can be used to specify the computers in the network that are allowed to access the licenses on the network dongle. By default, all computers in the network are allowed to access licenses (see figure 2, **allow=all**).

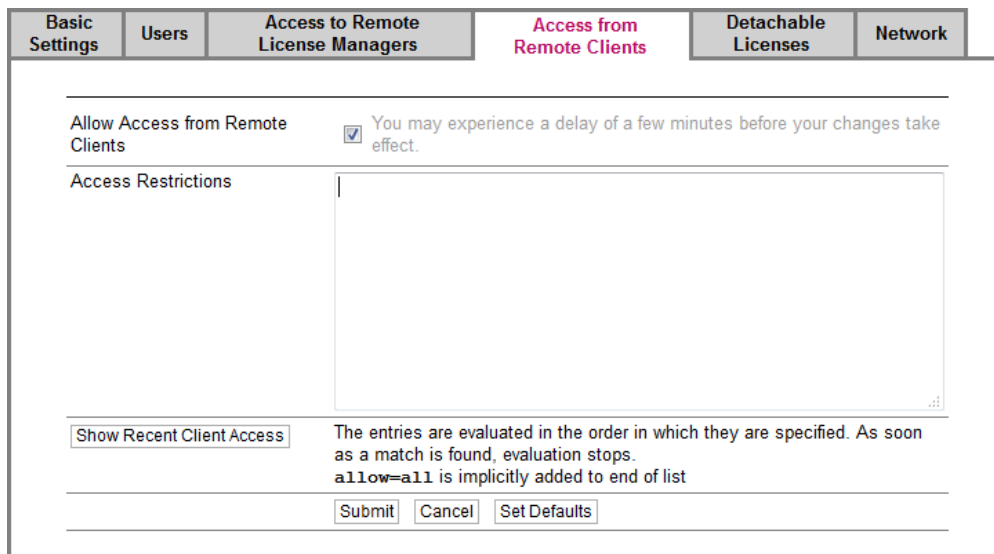


Figure 2: Configuration menu for the network dongle

You can also generally deny access for all computers (**deny=all**) and specify exceptions for certain computers only. This can be conveniently done via the **Show Recent Client Access** button. It opens a table listing all the computers connected to the network. Next to each computer in this list there is an **allow** button and a **deny** button. The exceptions can be conveniently chosen via these buttons. See the online help of the Admin Control Center for a detailed description of the configuration syntax.

It can be useful to disable the option **Allow Access from Remote Clients** as long as the table of recent clients is being used for this selection, as otherwise the table will be updated constantly, which causes the order in which the computers are listed to change frequently. This can complicate the selection, especially if many computers exist in the network.

The configuration possibilities described here are only a selection. These and all other settings are explained in detail in the online help of the Admin Control Center.

Once the configuration changes are completed, the licenses of the network dongle can be obtained by the authorized users and computers as soon as they are connected to the network.

<sup>2</sup> It is also possible to access the Admin Control Center of the network dongle from other computers within the network. To do so, replace the URL <http://localhost:1947> to be entered in the web browser by the following [http://{IP\\_address\\_of\\_the\\_license\\_server}:1947](http://IP_address_of_the_license_server:1947).

## Using favorites in the license selection dialog

When ArtemiS SUITE<sup>3</sup> is started, the license selection dialog shows which software modules the license server is currently offering. The user can then compile the modules required for the current task.

In order to utilize the available licenses as efficiently as possible and to avoid having to compile frequently used module combinations again and again, you can use the favorites function in the license selection dialog. It allows you to define custom software packages with different ArtemiS SUITE Modules for different analysis tasks and to save them as favorites. This accelerates the selection process and ensures that users only borrow the modules they actually need, leaving the other modules available for other users.

### Example

For a signal analysis accounting for the particular characteristics of human signal processing, you need analyses like Sharpness, Roughness or Relative Approach. After selecting the required modules (ASM 00, ASM 01, ASM 12 and ASM 16) in the license selection dialog, you can save the selection as a favorite by clicking on **Add current**, e.g., under the name **Psychoacoustic Analyses** (see figure 7).

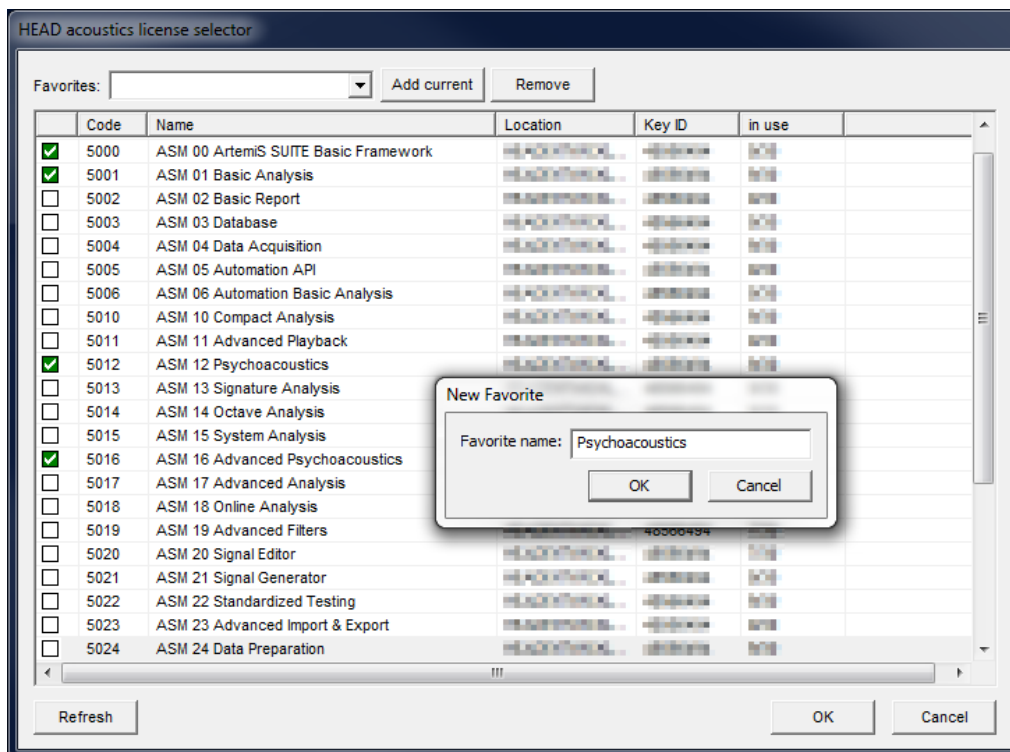


Figure 3: License selection dialog

For a different task, you may want to perform RPM-dependent analyses to be saved in standardized reports by means of User Documentation. After selecting the required modules (ASM 00, ASM 01, ASM 02, ASM 03 and ASM 13), you can save the selection, e.g., under the name **Reporting**.

After saving various favorites, you can reload each selection quickly and easily from a drop-down list by clicking on the **Favorites** field.

If a module is currently not available, this is indicated by an icon instead of .

<sup>3</sup> In order for the license selection dialog to be displayed, the option **Show license selection dialog on startup** must be enabled. This option can be found in ArtemiS SUITE under **Tools -> Options -> Basic-> Application -> Licensing -> Show license selection dialog on startup**. Another possibility to display the license selection dialog is to press and hold the shift key while starting ArtemiS SUITE.

You can also make your favorites list available to other users. To do so, copy the file *HASPLicenseSelector.xml*, which can be found at<sup>4</sup>

*C:\Users\{user name}\AppData\Roaming\HEAD acoustics,*

from the computer where you defined the favorites to the computer where you want the favorites to be available as well.

If you have any questions regarding the installation of your network dongle, please contact us at the following e-mail address: [nvh-support@HEAD-acoustics.de](mailto:nvh-support@HEAD-acoustics.de).

---

<sup>4</sup> Perhaps you have to activate the displaying of hidden files and orders in the options of your Windows Explorer, so that you can open this file path.