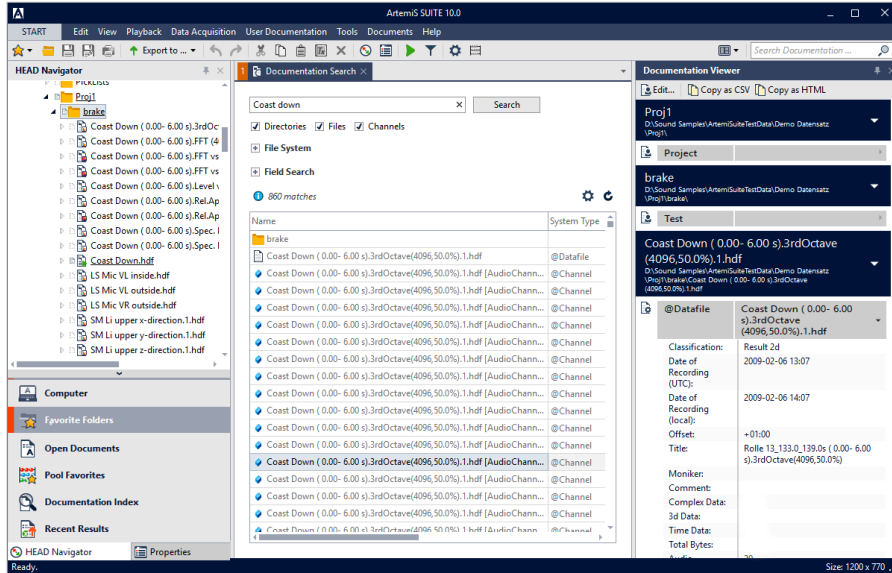


**ArtemiS SUITE Database Module
 (Code 5003)**

Expansion module for convenient searching and indexing of data



Overview

The Database Module allows users to index data in a local database, making them available for structured and convenient search.

Besides user documentation, it is also possible to search for system documentation items, such as units, front end or sensor data, etc. File names and paths can be searched for, too.

The sorting and representation of the contents of the database can be customized in Navigation Views, allowing users to structure the data according to their specific needs.

Features

- Quick indexing of data
- Automatic inclusion of all sub-folders when indexing a new folder
- Automatic updates of the data index in configurable indexing intervals
- Database search:
 - Inclusion of user documentation and system documentation in the search
 - Simultaneous search for multiple criteria
 - Search for file names/paths
 - Sorting of results in the results list
 - Further processing directly from the search results list using Pool, Automation, or Standardized Test Projects, with the Compact Analysis or the Sound Engineering Project, the Data Viewer, Channel Editor, etc.
 - Transfer of files from the results list to other program parts via copy & paste or drag & drop
- Any number of user-defined Navigation Views can be configured for quick and easy sorting of the database. Using Navigation Views allows users to adapt the visible structure of the data to their personal needs without having to move the actual data on the hard disk.
 - Retroactive adding or changing of search paths
 - Overview of all existing Navigation Views in a tree structure
 - Copying, pasting, renaming, and deleting of existing grouping elements via the context menu
 - Import and export of Navigation Views as XML files

Database

Using the database, files can be searched for attributes, or sorted and displayed in a Navigation View. Data is only indexed in the database, not stored or modified, which makes a separate backup of the database unnecessary and saves disk space. For each Windows user logged in with an individual user account, ArtemiS SUITE creates a dedicated local database.

Search function

The search function is excellently suited for specific, individual queries, where the results are clearly arranged and sorted.

Via an entry field in the main window, a search within the documentation items of the indexed data can be started quickly and directly.

Just as in the HEAD Navigator, the files in the results list of a database search can be used directly for most projects and processing tools of the ArtemiS SUITE via the context menu.

Navigation View

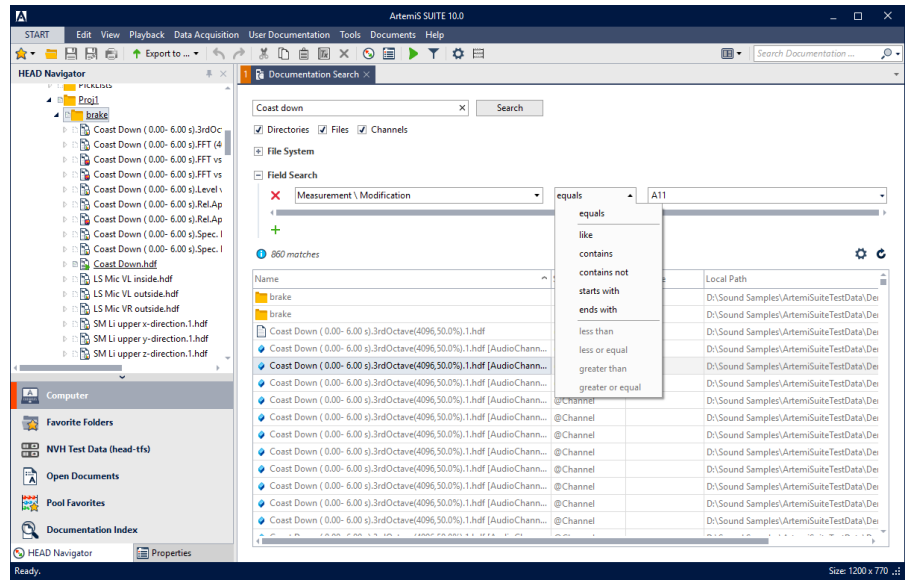
The Navigation View is used to sort and display indexed data. If multiple users access the same original data set, each user can create their personal Navigation View according to their needs and sort the data by their criteria. The data set itself is not affected by this. It is also possible to create multiple Navigation Views per user.

Requirements

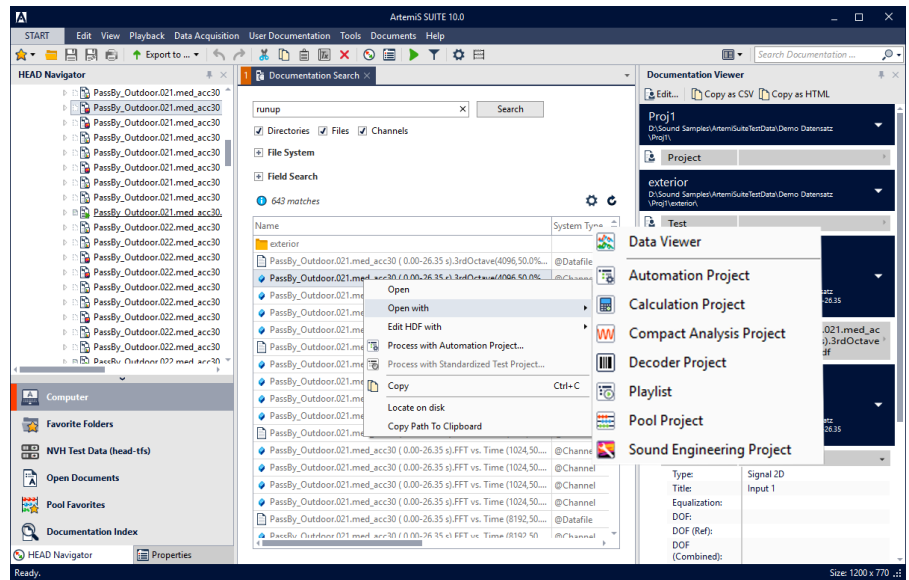
- ArtemiS SUITE Basic Framework (Code 5000)

Scope of Supply

- License file
 - ArtemiS SUITE Database Module (Code 5003)



The search function allows a quick and comfortable search within the indexed data sets.



From the results list of a database search, most projects and processing tools of ArtemiS SUITE can be accessed directly via a click with the right mouse button.